



6 Lake Street
PO Box 1436
Lawrence, MA
USA 01841

Telephone (617) 681-0392 • TeleFax (617) 681-9135 • Telex 928377

GOLD BONDED DIODES

TYPE AA144

- FEATURES**
- Low forward voltage drop
 - low power consumption
 - Thirty years of proven reliability
 - one million hours mean time between failures (MTBF)
 - Very low noise level
 - Metallurgical construction

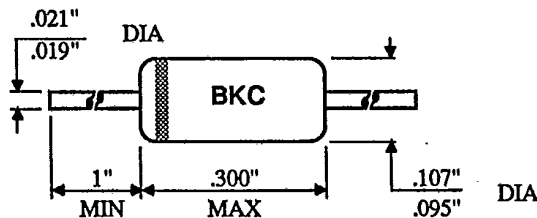
ABSOLUTE MAXIMUM RATINGS

Peak Inverse Voltage	95V	@ 25 °C
Peak Forward Current	500mA	unless
Operating Temperature Range	-65°C to 85°C	otherwise
Average Power Dissipation	80mW	specified

ELECTRICAL CHARACTERISTICS

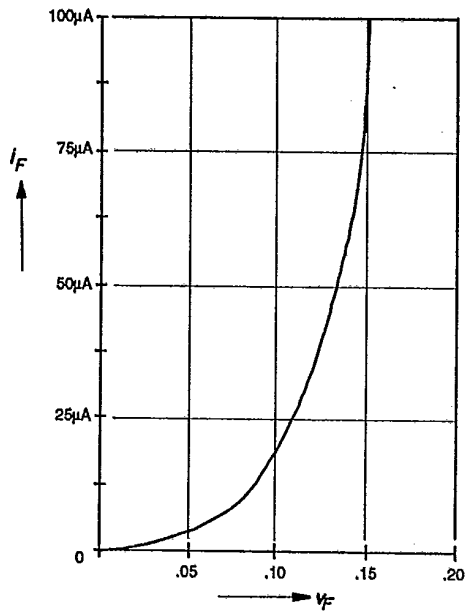
	Symbol	Conditions	Min.	Max.	Unit	T °C
Peak Inverse Voltage	PIV	1mA	95		V	25°
Inverse Current	I _r	75V		200	uA	25°
Forward Voltage	V _f	5mA		1.0	V	25°

MECHANICAL

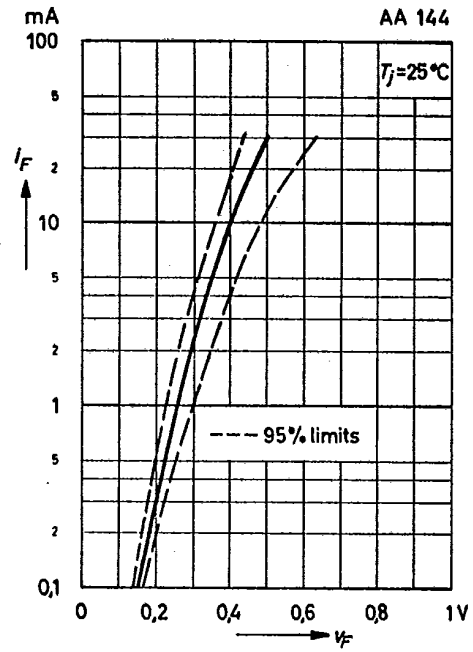


Passes all mechanical and environmental requirements of MIL-S-19500, including shock and vibration.

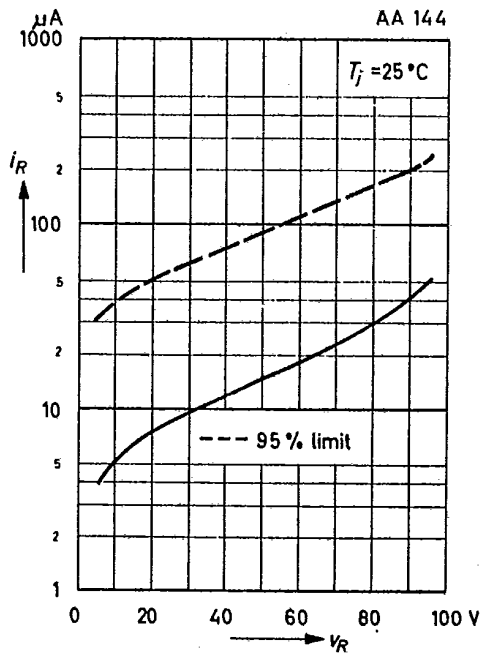
Low Current Forward Turn On



Forward Characteristic



Reverse Characteristic



Rectification Current Versus Peak Inverse Voltage at Half Wave Rectification and Resistive Load

